



# 2008-2009 GMT Quarterly Report for District (or Undistricted) **District 101GD**



GMT: **JON BJARNI THORSTEINSSO**

Location: **SWEDEN**

GMT CA: **4**

## CLUBS

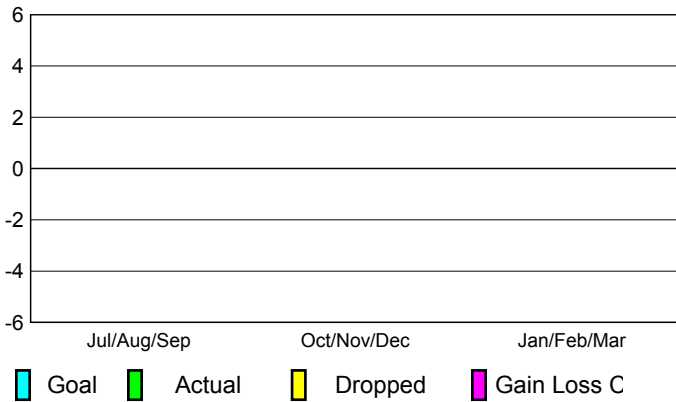
### Club Results 2008-2009

### Clubs 2007-2008

| Month         | New Club Goal | Actual New Clubs | Actual Dropped Clubs | Gain/Loss of Clubs | Gain/Loss of Clubs |
|---------------|---------------|------------------|----------------------|--------------------|--------------------|
| Jul/Aug/Sep   | 0             | 0                | 0                    | 0                  | 0                  |
| Oct/Nov/Dec   | 0             | 0                | 0                    | 0                  | 0                  |
| Jan/Feb/Mar   | 0             | 0                | 0                    | 0                  | 0                  |
| <b>Totals</b> | <b>0</b>      | <b>0</b>         | <b>0</b>             | <b>0</b>           | <b>0</b>           |

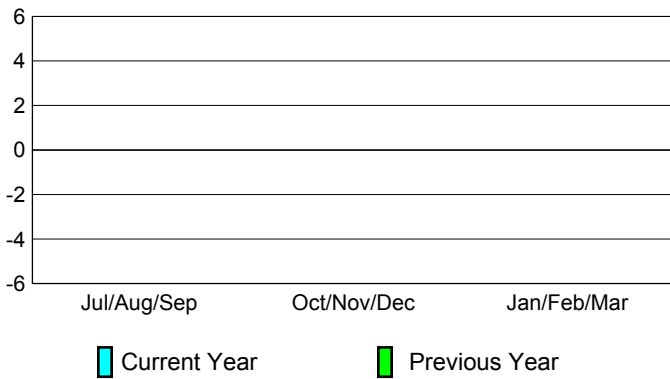
### Club Results 2008-2009

Goal, New, Dropped, Gain/Loss



### Comparison of Club Gain/Loss

Current Year Compared to the Previous Year



### YTD Status Quo Clubs 2008-2009

Status Quo Clubs Compared to Status Quo Members



## MEMBERSHIP

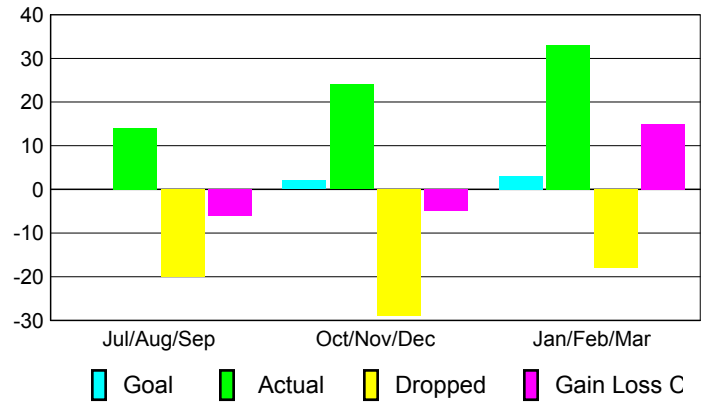
### Membership Results 2008-2009

### Membership 2007-2008

| Month         | Net Memb Goal | Actual New Memb | Actual Dropped Memb | Gain/Loss of Memb | Gain/Loss of Memb |
|---------------|---------------|-----------------|---------------------|-------------------|-------------------|
| Jul/Aug/Sep   | 0             | 14              | -20                 | -6                | -9                |
| Oct/Nov/Dec   | 2             | 24              | -29                 | -5                | -6                |
| Jan/Feb/Mar   | 3             | 33              | -18                 | 15                | 17                |
| <b>Totals</b> | <b>5</b>      | <b>71</b>       | <b>-67</b>          | <b>4</b>          | <b>2</b>          |

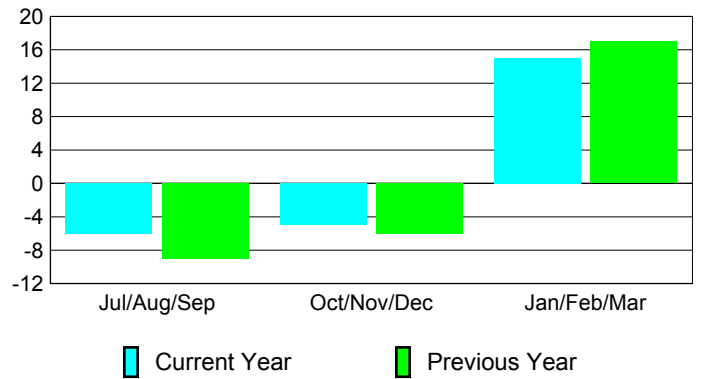
### Membership Results 2008-2009

Goal, New, Dropped, Gain/Loss



### Comparison of Membership Gain/Loss

Current Year Compared to the Previous Year



### Gender Comparison 2008-2009

